



BOSS AGRICULTURE



PLANTERS

INDEX

Single Disc Row Units	4
Double Disc Row Units	6
Narrow Disc Units	8
Parallelogram Tyne Units	10
Stump Jump Tyne Units	14
Precision Vacuum Planters	16
Para-Lift Planter Frames	18
Supa-Flex Planter Frames	20
End-Tow Planter Frames	22
Bridge Planter Frames	24
Para-Flex Planter Frames	26
Single Bar Planter Frames	28
Linkage Planter Frames	32
Slimline Planter Frames	36
S-Till Cultivator	38
Disc Shanks	40
Gas & Liquid Trailers	43



SINGLE DISC UNITS

Today's zero till or minimum tillage farming techniques are constantly pushing the boundaries for the performance of seeding and planting equipment. In the development of our Single Disc Row Units we address many of the challenges minimum tillage farmers face. Our row units are effective at penetrating tight soils and are equally capable when faced with the sticky conditions often encountered during winter planting.

The combination of an offset and undercut disc opener allows our single disc planting units to dig effectively without requiring an over-engineered heavy frame to force the row units into the ground. To tackle the wet sticky winter conditions where stubble becomes rope bound, a combination of a simplistic low profile seed boot, floating cleaning wheel and active mud scraper system has proven to be very effective in minimum tillage operations.



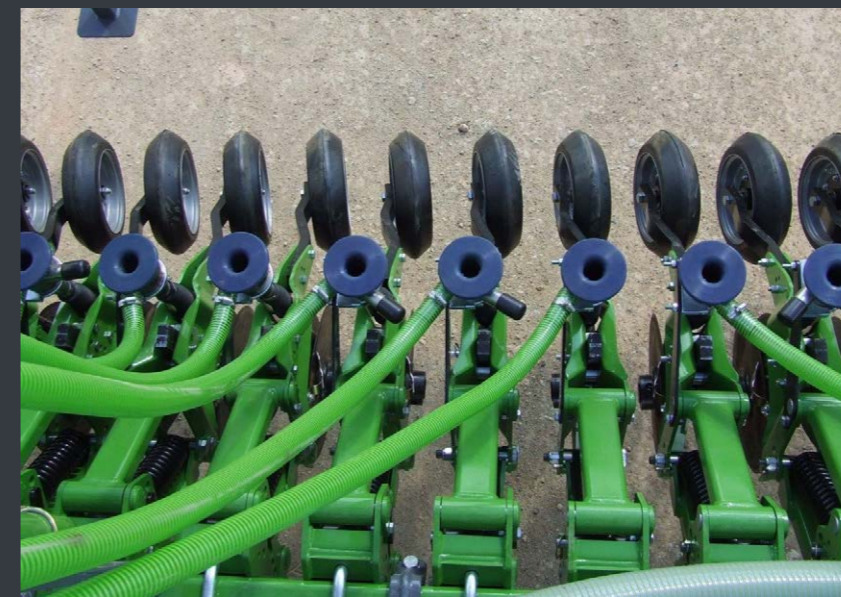
SINGLE DISC SPECIFICATIONS

	 SX25	 SX25P	 NX25
Unit Weight	100kg	120kg	105kg
Disc Dimensions	18" (20" Optional)	18" (20" Optional)	18"
Vertical Travel	300mm	340mm	340mm
Down Force Mechanism	Hydraulic Or Spring	Spring	Spring
Max Down Force	300kg	320kg	305kg
Minimum Single Bar Spacing	375mm	375mm	300mm
Under Bar Operating Height	620mm	620mm	620mm
Active Mud Scraper	✓	✓	✓
Optional Rear Chain Harrow	✓	✓	✓
Row Units Or Complete Machines	✓	✓	✓

DOUBLE DISC UNITS

BOSS Agriculture's Double Disc Row units feature a robust parallelogram twin disc opener design that delivers optimal seed placement. The units have been developed primarily for minimum or no-till broadacre farming applications where a tough, simple, highly accurate planter is required. The units offer superior seed placement, excellent ground following ability and minimal ground disturbance/moisture loss.

Units feature twin 16" discs that are mounted on maintenance free, sealed for life double race ball bearings. The discs operate at opposing 4 degrees for a narrow seed trench which reduces required down force and creates a smaller "vee" to close.



DOUBLE DISC SPECIFICATIONS

		
	DX50	NX20
Unit Weight	145kg	85kg
Disc Dimensions	Twin 16" Disc	Twin 16" Disc
Vertical Travel	305mm	305mm
Minimum Single Bar Spacing	500mm	230mm
Max Down Force	345kg	285kg
Under Bar Operating Height	620mm	620mm
Active Mud Scraper	✓	✗
Optional Rear Chain Harrow	✓	✓
Simple Depth & Pressure Adjustments	✓	✓
Row Units Or Complete Machines	✓	✓

NARROW DISC UNITS

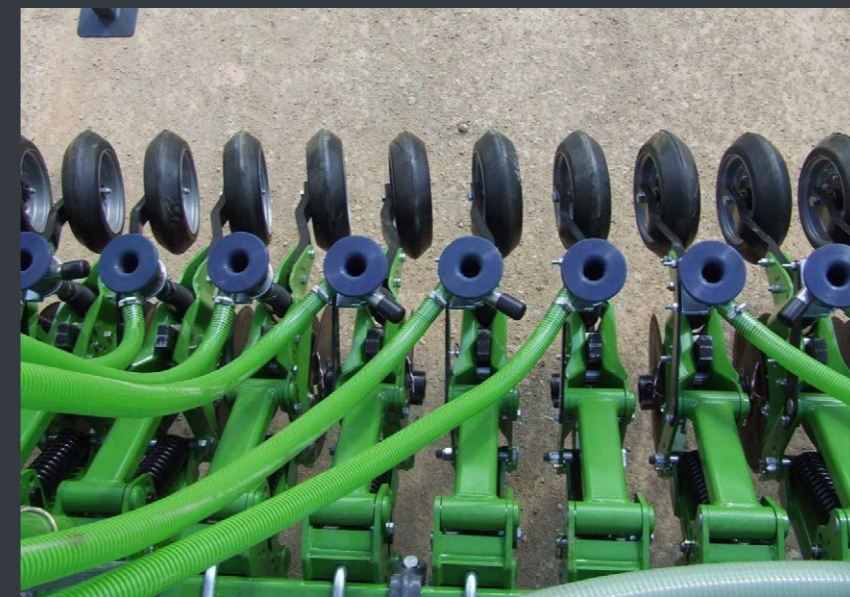
BOSS Agriculture's range of Narrow Disc Openers are ideal for narrow row applications and can be used for both seeding and fertilising applications. The narrow design and reduced weight means that units can be fitted in between existing rows, or set up on a single toolbar with spacing down to 228mm for the NX20 range and 300mm for the NX25.

All of our products are manufactured in our Inverell NSW factory, and have been specifically designed with Australian farmers and conditions in mind. They require minimal servicing to keep you in the paddock for longer.



NARROW DISC SPECIFICATIONS

		
	NX25	NX20
Unit Weight	105kg	85kg
Disc Dimensions	Single 16" Disc	Twin 16" Disc
Vertical Travel	300mm	300mm
Minimum Single Bar Spacing	300mm	230mm
Max Down Force	305kg	285kg
Under Bar Operating Height	620mm	620mm
Active Mud Scraper	✗	✓
Optional Rear Chain Harrow	✓	✓
Simple Depth & Pressure Adjustments	✓	✓
Row Units Or Complete Machines	✓	✓



PARALLELOGRAM TYNE UNITS

BOSS Agriculture's Parallelogram Tyne Units set the standard in broadacre seeding. Our units are designed from experience to deliver a planting unit that is accurate, tough and simple to operate and maintain. We offer a wide range of tyne unit models to suit most applications. Our Parallelogram Tyne Units can also be fitted with optional double and single disc shanks to suit your conditions. Units are available in single shoot and double shoot paired row with liquid options.





PARALLELOGRAM TYNE SPECIFICATIONS

					
	VX65	TX45	TX65c	TX65	TX80
Unit Weight	135kg	170kg	135kg	210kg	211kg
Tyne Breakout Force	Variable Hydraulic 125lb-625lb	Spring 550lb	Variable Hydraulic 125lb-625lb	Spring 650lb	Variable Hydraulic 800lb (Opt. 1400lb)
Heat Treated Spring Steel Tyne Dimensions	1x2" - 25x50mm	5/8x2" - 16x50mm (Opt. 1x2"-25x50mm)	1x2" - 25x50mm	1x2" - 25x50mm (Opt. 1x3"-25x75mm)	1x2" - 25x50mm (Opt. 1x3"-25x75mm)
Drum Coulter Size	*	18" Disc 13" Drum	18" Disc 13" Drum	20" Disc 15" Drum	20" Disc 15" Drum
Max Down Force	Up to 305kg	Up to 370kg	Up to 305kg	Up to 400kg	Up to 400kg
Diamond Clamp Width	158mm	160mm	158mm	200mm	200mm
Under Bar Operating Height	680mm	680mm	680mm	680mm	680mm
Opt. Double Shoot Tyne	✓	✓	✓	✓	✓
Opt. Rear Chain Harrow	✓	✓	✓	✓	✓
Opt. Press Wheel Scraper	✓	✓	✓	✓	✓
Opt. Low Draft Shank	✓	*	✓	✓	✓
Double Disc Shank Compatible	✓	✓	✓	✓	✓

STUMP JUMP TYNE UNITS

BOSS Agriculture's Stump Jump planting & cultivating row units are equally at home in direct drill, zero till, minimum till or conventional cultivating applications. Incorporating many of the features that our parallelogram units have, the row unit offers flexibility through its design to deliver a planting unit that is tough and simple to operate & maintain. Available with an in-frame press wheel.



STUMP JUMP TYNE SPECIFICATIONS

	 SJ45	 SJ65	 SJ80
Unit Weight	67kg	70kg	72kg
Breakout Force	Spring 550lb	Spring 650lb (Opt. 850lb)	Variable Hydraulic 800lb (Opt. 1400lb)
Cultivating or Planting Shank Dimension	5/8x2"-25x50mm (Opt. 1x2" 25x50mm)	1x2"-25x50mm (Opt. 1x3"-25x75mm)	1x2"-25x50mm (Opt. 1x3"-25x75mm)
Opt. Double Disc Shank	✓	✓	✓
Opt. Press Wheel	✓	✓	✓



PRECISION VACUUM PLANTERS

BOSS Agriculture's range of Precision Vacuum Planters deliver unequalled accuracy and longevity. Our Precision Planters are configurable on either trailing or three-point linkage toolbars with different folding or stackfold options to suit most requirements. Our precision double disc DX50 row units set the benchmark in low maintenance high accuracy seeding. Precision vacuum meters and seed boxes can also be fitted onto our SX range of single disc units.

Our DX50 row unit is compatible with Precision Planting or John Deere Seed Metering systems depending on customer preference.

With many advances in precision seeding the last few years our row unit can be fitted with many great options to increase your yield potential including:

PSS vSet – Precision seed metering vSet features a flat seed disk with a 5-lobed singulator for precise consistent seed metering utilising a single vacuum setting for simplicity & ease of use. Each seed releases down the centre of the tube – critical to optimum spacing.

PSS vDrive – An electric drive on each individual seed meter delivering superior population control. The integrated controller in the motor allows for sub-second execution of the correct population, row by row and around curves.

PSS Delta Force – Delivering consistent seeding depth across all soil types with constant pressure on the ground which also helps with press wheel consistency & field finish.

PSS CleanSweep – Can be used via a mechanical adjustment or an air operated ram in trash whipper to deliver precise even row cleaning or soil movement across all soil types, adjustable from the cab.

PSS V-Apply – Row by row liquid fertiliser control via the Precision 20/20 monitor for accurate & simple product application.

PSS Speedtube – High speed seed delivery taking the seed from the metering unit to the seed trench via a conveyor system that is matched to ground speed for increased efficiency whilst maintaining accuracy.

PSS Smartfirmer - Seed-firmer sensor that measures organic matter, moisture, residue and temperature. Now you can optimize hybrid selection, population, depth, fertility and row cleaners in real time.

For more information please visit Precision Seeding's website: <https://pssag.com>



PRECISION VACUUM PLANTER FEATURES

- ✓ Heavy duty parallelogram, no greasing, long life & maintenance free
- ✓ 305mm of parallelogram travel for exceptional ground following
- ✓ Spoked gauge wheel design for performance in testing conditions
- ✓ Trailing gauge wheel design keeps gauge wheels against the disc and ensures long life in pivot point
- ✓ External gauge wheel arm to reduce mud build up & blockages in testing conditions
- ✓ Built in mud scraper ring moulded to the gauge wheel for superior operation in testing conditions
- ✓ No greasing required on the row unit
- ✓ Various liquid and dry fertilising options
- ✓ Range of press wheel closing systems available
- ✓ Fast simple depth and pressure adjustments
- ✓ Optional trash whippers available, including floating or fixed



PARA-LIFT PLANTER FRAMES

The Para-Lift range of trailing planter frames from BOSS Agriculture are a cost-effective fixed drawbar frame suited to most broadacre areas. The advantage of a Para-Lift frame is that a percentage of the planter's weight is transferred directly onto the tractor drawbar giving better traction and making use of the available horse power.

Para-Lift trailing planter frames are constructed of 100 x 100 x 9mm RHS with plated joints on both the top and underside of the frame to ensure maximum strength & durability. The proven frame design built with experience ensures no dead weight is carried with all cross members load carrying or supportive, this allows for some flexibility with row spacings and provides better access to row units for servicing. The frame lifts very high (1400mm under-bar) making servicing and general inspection of row units easy.

Para-Lift planter frames are available in standard widths of 9M/30ft to 24M/78ft. With single or double folding options frames can be configured with different row unit or depth wheel spacings as required.



PARA-LIFT PLANTER FRAME FEATURES

- ✓ Row spacings starting from 300mm
- ✓ Fixed draw-bar design with in-frame lift wheels
- ✓ Tough durable 100mm x 100mm x 9mm RHS frame
- ✓ 5 Tonne capacity hubs used throughout
- ✓ High lift frame design
- ✓ Walking lift frame wheels in centre section
- ✓ All hydraulics hoses are protected with spiral wrap in rub prone areas
- ✓ Hydraulic saddles are used to carry all hoses
- ✓ All pivots are fitted with replaceable spherical ball pivots
- ✓ Saddle provisions for air seeder hosing
- ✓ 2 stage parking jack
- ✓ Laser cut identification on drawbar end for all hydraulic hoses
- ✓ Laser cut hydraulic hose keepers provided when unhitching machine
- ✓ Adjustable drawbar tongue standard
- ✓ Frame wheel mud scrappers
- ✓ Parking stands
- ✓ Safety fold pins
- ✓ Optional toolbox, handwash tank & drawbar basket
- ✓ Optional liquid tank & hydro pump

SUPA-FLEX PLANTER FRAMES

The Supa-Flex (floating hitch) range of trailing planter frames from BOSS Agriculture have been developed for farmers & contractors operating in contoured, undulating or melon hole country but the frame is equally suited to flat country. The Supa-Flex design provides greater flexibility between the tractor & implement to maximise the machines ground following ability. Fitted with a floating hitch and featuring unique flexibility in the centre frame to not only flex up and down but also fore & aft the frame is able to twist over the length of the machine; this unique feature means wider machines are able to be utilised in uneven ground conditions whilst still maintaining seeding accuracy.

When operating in contour banks or melon hole country the flexing frame design provides superior ground following ability which allows planting row units to maintain an even planting depth whilst giving constant press wheel pressure for a faster, more even crop germination. During transport the stability of the machine is greatly improved as weight is evenly distributed on centre wheels. The Supa-Flex design also means that frame stress and fatigue is minimised for a longer frame life.

Supa-Flex trailing planter frames lift very high (1400mm under-bar) making servicing and general inspection of row units easy.

Supa-Flex planter frames are available in standard widths of 9Metres/30ft single fold, 12Metres/40ft single or double fold or 18Metres/60ft double fold and frames can be configured with different row units or frame wheel spacings as required (custom frame design's are also available).



SUPA-FLEX PLANTER FRAME FEATURES

- ✓ Row spacing starting from 228mm
- ✓ Tough durable 100mm x 100mm x 9mm RHS frame
- ✓ High lift frame design
- ✓ Unique Supa-Flex centre section for exceptional ground following ability
- ✓ Floating hitch
- ✓ All hydraulics hoses are protected with spiral wrap in rub prone areas
- ✓ Hydraulic saddles are used to carry all hoses
- ✓ All pivots are fitted with replaceable spherical ball pivots
- ✓ R1 lug tyres standard
- ✓ Saddle provisions for air seeder hosing
- ✓ 2 stage parking jack
- ✓ Laser cut identification on drawbar end for all hydraulic hoses
- ✓ Laser cut hydraulic hose keepers provided when unhitching machine
- ✓ Parking stands
- ✓ Safety fold pins
- ✓ Optional toolbox, handwash tank & drawbar basket
- ✓ Optional liquid tank & hydro pump

END-TOW TRAILING PLANTER FRAMES

BOSS Agriculture's range of End-Tow (floating hitch) trailing planter frames have been developed for farmers & contractors who require wide machines and have width constraints when moving from farm to farm or shedding equipment.

Our end tow designed frames are suited for both flat level ground conditions but also feature our unique flexing frame design which means they are also highly suited for operating in contoured, undulating or melon hole country. The End-Tow frame design is fitted with a floating hitch and features unique flexing sections throughout the length of the machine which not only flex up and down but also fore & aft so the frame is able to twist over the length of the machine; this unique feature means wider machines are able to be utilised in uneven ground conditions whilst still maintaining seeding accuracy.

When operating in contour banks or melon hole country the flexing frame design provides superior ground following ability which allows planting row units to maintain an even planting depth whilst giving constant press wheel pressure for a faster, more even crop germination. The flexing design also means that frame stress and fatigue is minimised for a longer lasting frame.

End-Tow trailing frames are constructed of 100 x 100 x 9mm RHS with plated joints on both the top and underside of the frame to ensure maximum strength & durability. The proven frame design built with experience ensures no dead weight is carried with all cross members load carrying or supportive, this allows for some flexibility with row spacings and provides better access to row units for servicing. The frame lifts very high making servicing and general inspection of row units easy.

The BOSS range of End-Tow frames are available in a variety of seeding widths & configurations.



END-TOW FRAME FEATURES

- ✓ Row spacing starting from 300mm
- ✓ 2 or 3 Bar designs available
- ✓ Unique flexing sectional frame
- ✓ All pivots are fitted with replaceable spherical ball pivots
- ✓ Hydraulically folding drawbar (Optional)
- ✓ Stay cables
- ✓ Hydraulic saddles are used to carry all hoses
- ✓ Saddle provisions for air seeder hosing
- ✓ 2 stage parking jack
- ✓ Laser cut identification on drawbar end for all hydraulic hoses
- ✓ Laser cut hydraulic hose keepers provided when unhitching machine
- ✓ All hydraulics hoses are protected with spiral wrap in rub prone areas
- ✓ Parking stands
- ✓ Optional toolbox, handwash tank & drawbar basket

BRIDGE TRAILING PLANTER FRAMES

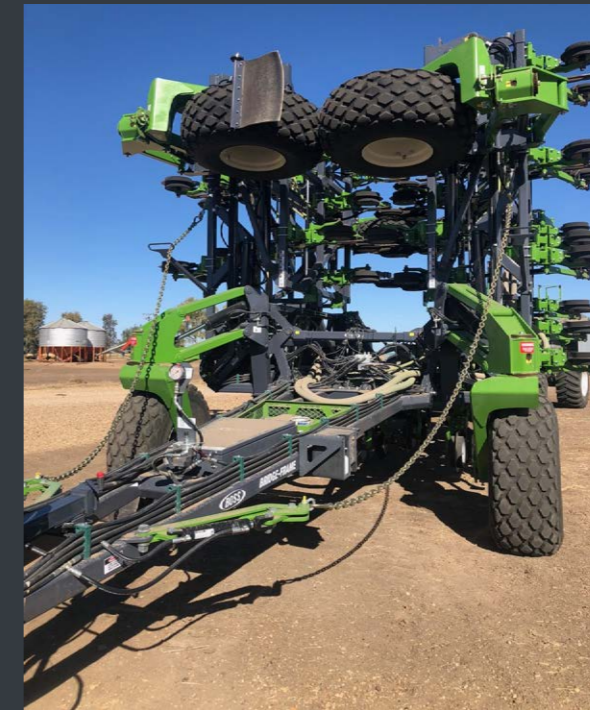
BOSS Agriculture's Bridge (floating hitch) range of trailing planter frames have been developed to keep frame wheel assemblies outside the main frame which promotes better stubble flow and allows narrower row spacings to be achieved. Available in 3 & 4 bar designs with optional rear press wheel mounting to further optimise trash flow at narrow spacings.

Our Bridge style designed planter frames are suited for both flat level ground conditions but also feature our unique flexing centre section which allows the frame to not only flex up and down but also fore & aft so the frame is able to twist over the length of the machine; this unique feature means wider machines are able to be utilised in uneven ground conditions whilst still maintaining seeding accuracy.

Bridge trailing planter frames lift very high (1400mm under-bar) making servicing and general inspection of row units easy.

Bridge trailing planter frames are constructed of 100 x 100 x 9mm RHS with plated joints on both the top and underside of the frame to ensure maximum strength & durability. The proven frame design built with experience ensures no dead weight is carried with all cross members load carrying or supportive, this allows for some flexibility with row spacings and provides better access to row units for servicing.

The BOSS range of bridge planter frames are available in a variety of seeding widths & configurations including single fold & double folding designs.



BRIDGE FRAME FEATURES

- ✓ Row spacing starting from 228mm
- ✓ 3 or 4 Bar designs available
- ✓ External frame wheels
- ✓ Rear mounted press wheel options
- ✓ Unique flexing sectional frame
- ✓ All pivots are fitted with replaceable spherical ball pivots
- ✓ Hydraulic saddles are used to carry all hoses
- ✓ Laser cut identification on drawbar end for all hydraulic hoses
- ✓ Saddle provisions for air seeder hosing
- ✓ 2 stage parking jack
- ✓ Laser cut hydraulic hose keepers provided when unhitching machine
- ✓ All hydraulics hoses are protected with spiral wrap in rub prone areas
- ✓ Parking stands
- ✓ Optional 18m narrow fold design available
- ✓ Optional toolbox, handwash tank & drawbar basket

PARA-FLEX PLANTER FRAMES

BOSS Agriculture's unique Para-Flex planter frame is a trailing unit fitted with a floating hitch designed specifically for use with our single disc (NX25, SX25 & SX25P) and double disc (NX20 & DX50) row units. The Para-Flex frames unique design is ideal for farmers & contractors operating in contoured, undulating or melon hole country. The simple and robust 2 bar sectional frame is available in widths up to 18metres/60ft wide in a double fold design.

The main benefits of the Para-Flex planter frame compared to conventional planting frames is its ability to follow contoured, undulating or melon hole country with precision, allowing seeding depth to be as accurate as possible for fast and even crop germination. The key to achieving this lies in the frame design. Common wheel bridge frames fitted with large flotation tyres suspend a multi-sectional frame with the ability to not only flex up & down but also fore and aft allowing the frame to twist over the length of the machine.

During transport the stability of the machine is greatly improved as weight is evenly distributed on all centre section wheels. The suspended sectional frame also minimises stress being transferred back into the wheel frames to improve the frame life and help maintain the frames integrity. The Para-Flex frames engineered toughness means the frame is a very open design for accessibility without compromising its strength and durability.



PARA-FLEX PLANTER FRAME FEATURES

- ✓ Row spacing starting from 228mm
- ✓ Tough durable 100mm x 100mm x 9mm RHS frame
- ✓ External frame wheels
- ✓ Multi sectional frame for exceptional ground following ability
- ✓ Floating hitch
- ✓ All hydraulics hoses are protected with spiral wrap in rub prone areas
- ✓ Hydraulic saddles are used to carry all hoses
- ✓ All pivots are fitted with replaceable spherical ball pivots
- ✓ Saddle provisions for air seeder hosing
- ✓ 2 stage parking jack
- ✓ Laser cut identification on drawbar end for all hydraulic hoses
- ✓ Laser cut hydraulic hose keepers provided when unhitching machine
- ✓ Parking stands
- ✓ Safety fold pins
- ✓ Optional toolbox, handwash tank & drawbar basket
- ✓ Optional liquid tank & hydro pump

SINGLE BAR TRAILING FRAMES

RIGID HITCH

BOSS Agriculture's Rigid Hitch range of single bar trailing frames have been developed for both our single and double disc range of planting row units. These frames are suited to flat or gently undulating country and are a cost effective trailing frame. The single bar frame design features an 200mm x 200mm RHS mainframe and a remote 100mm x 100mm RHS toolbar that the BOSS range of row units bolt on to, this allows for a lot of flexibility around row spacing & wheel spacings or future changes in your farming operation.



SINGLE BAR TRAILING FRAMES

FLOATING HITCH

BOSS Agriculture's Floating Hitch trailing frame combines the best of our ground following flex-frame features with the simple sleekness of a single bar planter. Available in working widths from 8 to 24 metres this machine is equally at home planting high value summer crops on wide spacings such as Cotton, Sorghum and Pulses or planting winter cereals down to 230mm spacings (with NX20 row units). This machine is the best single bar planter available for ground following in contour banks and melon holes to maintain an even frame to ground height across its working width and when combined with our single or double disc row units this gives you even seed depth across the working width ensuring you will get great crop establishment. Single Bar Floating Hitch frames are fitted with floatation tyres which help minimise soil compaction in field & our 12 metre version has a double fold design that keeps the transport width as narrow as possible (under 4.5 metres).



SINGLE BAR TRAILING FRAMES

FOLD FORWARD

BOSS Agriculture's Forward Fold planter frame combines wide working widths in field with the Narrowest possible transport width so producers get the best of both worlds. Combining a 18 to 24 metre planting width with a folded transport width of less than 4.5 metres, gives maximum productivity combined with easy, legal road travel (check your specific area for rules & regulations for oversize equipment). The planter's unique weight sharing design prevents the tractor's drawbar from being overloaded.

Available in various widths BOSS Agriculture's Forward Fold planters can fill a gap where others can't!



SINGLE BAR TRAILING FRAME FEATURES

- ✓ 200mm x 200mm RHS Mainframe
- ✓ Single or double folding options available
- ✓ Frame widths from 6 metres to 36 metres
- ✓ Available with either a rigid or floating hitch depending on your requirements
- ✓ All hydraulics hoses are protected with spiral wrap in rub prone areas
- ✓ Hydraulic saddles are used to carry all hoses
- ✓ Saddle provisions for air seeder hosing
- ✓ All pivots are fitted with replaceable spherical ball pivots
- ✓ 2 stage parking jack
- ✓ Laser cut identification on drawbar end for all hydraulic hoses
- ✓ Laser cut hydraulic hose keepers provided when unhitching machine
- ✓ Parking stands
- ✓ Safety fold pins
- ✓ Optional toolbox, handwash tank & drawbar basket
- ✓ Optional liquid tank & hydro pump

LINKAGE PLANTER FRAMES

SINGLE BAR LINKAGE

Our Standard Linkage Frames are manufactured using a 200mm x 200mm RHS mainframe and a remote 100mm x 100mm RHS toolbar that the BOSS range of row units bolt on to, this allows for a lot of flexibility around row spacing & wheel spacings or future changes in your farming operation. Frames are available in widths from 6-18 metres with single & double fold options available. Single bar frames suit all BOSS row units and are available with lift assist or offset linkages if required.



LINKAGE PLANTER FRAMES

TWO BAR LINKAGE

Our Two Bar Linkage frames are manufactured using 100mm x 100mm RHS and allow for the fitment of all BOSS row units. Two bar frames may be required for narrow spacings on disc machines or to promote stubble flow on tyne machines, they are available with lift assist or offset linkages if required. We can also mount liquid tanks or air seeder bins on top to deliver a compact highly manoeuvrable machine. Two bar machines are available in widths from 6-12 metres with various fold options available.



LINKAGE PLANTER FRAMES

STACKFOLD

Our linkage Stackfold frames are manufactured using an 200mm x 200mm RHS mainframe and a remote 100mm x 100mm RHS toolbar that the BOSS range of row units bolt on to, this allows for a lot of flexibility around row spacing & wheel spacings or future changes in your farming operation. Frames are available in widths from 9-12 metres with rigid or contour following wings available. Stackfold frames suit all BOSS disc row units and are available with lift assist or offset linkages if required. Our 12 metre Stackfold folds up under 6 metres for travel.



LINKAGE PLANTER FRAMES

LINKAGE PLANTER FEATURES

- ✓ Various widths & designs available
- ✓ Suitable for all disc and tyne units
- ✓ Hydraulic saddles are used to carry all hoses
- ✓ Saddle provisions for air seeder hosing
- ✓ Optional heavy duty depth gauge wheels available
- ✓ Optional frame mounted central fill, air seeder or liquid tanks available
- ✓ All hydraulics hoses are protected with spiral wrap in rub prone areas
- ✓ Cat 3/ Cat 4 Linkage as standard
- ✓ Parking stands

SLIMLINE PLANTER FRAMES

The BOSS Agriculture Slimline Planter has been developed to meet the needs of customers who need an easy manoeuvring planter that folds narrow for easy road transport. The Slimline Planter is an ideal solution for livestock producers and contractors who wish to sow pasture and fodder crops. Our unique design has produced an efficient planter that does not need a pilot vehicle for road transport, saving you time and money.

The Slimline Planter is available with either our frame mounted air seeder or a tow behind option. Pairing the Slimline with our frame mounted air seeder gives 4500L of capacity in a twin bin, plus the option of a proportionally large 600L small seeds box. For ease of access while filling the small seeds box has excellent access via folding steps and a non-slip platform with seeding table.



SLIMLINE FRAME FEATURES

- ✓ Row spacing starting at 150mm
- ✓ Narrow folds under 3.5m for ease of transport
- ✓ External frame wheels
- ✓ All pivots are fitted with replaceable spherical ball pivots
- ✓ Hydraulic saddles are used to carry all hoses
- ✓ Laser cut identification on drawbar end for all hydraulic hoses
- ✓ Saddle provisions for air seeder hosing
- ✓ Hydraulic parking jack
- ✓ Laser cut hydraulic hose keepers provided when unhitching machine
- ✓ All hydraulics hoses are protected with spiral wrap in rub prone areas
- ✓ Optional toolbox & handwash tank

S-TILL CULTIVATOR

Strategic tillage introduces occasional tillage into a minimum tillage farming operation to combat herbicide resistant weeds and soil compaction. BOSS Ag's S-Till (Strategic Till) Cultivator has been designed specifically for these applications. The S-Till can be fitted with an air seeder hose kit and cartpull to double as a backup planter, deep chickpea or faba bean planter, or a mid to deep fertiliser applicator.

The S-Till has a 5 bar parallel lift frame design which aids trash flow. Narrow row spacings down to 228mm available. As standard fitted with 3" x 1" high tensile tyne, with a range of tyne breakout from 450-800lb spring or 650-1400lb hydraulic.



SINGLE DISC PLANTER SHANKS

BOSS Agriculture Single Disc Planter Shanks replace the existing planting tyne when required & can be used for planting, fertilising or side dressing operations.

The Single Disc Planter Shank operates on a 10deg undercut, this allows the unit to penetrate tough soils & minimise the potential of hair pinning stubble when sowing at most depths. With an adjustable sowing boot, disc life is extended and the use of the proven BOSS spoked cleaning wheel & active mud scraper system ensures the unit will perform in the wet sticky conditions usually encountered during winter sowing (Single Disc Shanks may not fit all row positions or spacing's depending on frame design & wheel locations).

For the best results the BOSS Angled Press Wheel Assembly is advisable to achieve a perfect finish.

Benefits of Single Disc Shanks:

- ✓ Up to 50% fuel saving (compared to using a tyne)
- ✓ Low disturbance
- ✓ Save valuable moisture
- ✓ Cut through heavy stubble
- ✓ Faster operating speeds
- ✓ Minimal soil throw
- ✓ Performance in wet sticky soil types
- ✓ Ability to penetrate very tight soil types
- ✓ Sealed for life bearing – no greasing required



DOUBLE DISC PLANTER SHANKS

BOSS Agriculture's Double Disc planter shanks simply replace your existing planting tyne. They are used widely for fertilising and planting without limiting your ability to easily switch back to the tyne when ground conditions dictate a change.

With 5000+ Double Disc Shanks in the paddock, it is an invaluable tool for many farmers planting in varying soil types & a cost effective way to improve your existing machinery line up.

BOSS Agriculture Double Disc Planter Shanks are designed to fit into most straight tyne (edge on tyne) machines & will suit 1" x 2", 1" x 3" & 5/8" x 2" tyne pockets.

We have retro-fitted a number of brands including: Gyrat, Gason, Janke, Excel, Gessner, John Shearer, Flexicoil and Morris etc.

The Double Disc is also available with a vee press option for optimum performance when seeding.

BOSS Agriculture Double Disc Planter Shanks can also be used for side banding units, as they can be fitted onto our TX Parallelogram planter range of row units, allowing fertiliser to be applied beside the seed at sowing.

Benefits of Double Disc Shanks:

- ✓ Up to 50% fuel saving (compared to using a tyne)
- ✓ Low soil disturbance
- ✓ Save valuable soil moisture
- ✓ Cut through heavy stubble
- ✓ Faster planting & fertilising speed
- ✓ Minimal maintenance requirements
- ✓ Adjustable seed tube to maximise performance and seed tube life
- ✓ Sealed for life bearing – no greasing required

TD50 PRECISION DOUBLE DISC

The BOSS Agriculture Precision Double Disc option allows the complete fitment of the BOSS DX50 undercarriage (Double Disc Row Unit with Depth Control Gauge Wheels & Walking Vee Press Wheels) onto your existing TX65 or TX80 row units. This option simply replaces the tyne and straight press wheel to give you a precision double disc undercarriage with walking gauge wheels for seed depth control and vee press wheels for fast even germination (the front coulter assembly must be removed).

The BOSS Agriculture precision disc undercarriage will fit most straight tyne (edge on tyne) machines & will suit 1" x 2" & 1" x 3" tyne pockets.

Benefits of the precision Double Disc include:

- ✓ Accurate seed placement & precise seed depth control
- ✓ Utilise existing tyne planting equipment to minimise investment cost
- ✓ Ability to set up summer rows only on existing equipment
- ✓ Up to 50% fuel saving (compared to using a tyne)
- ✓ Low soil disturbance
- ✓ Save valuable moisture
- ✓ Cut through heavy stubble
- ✓ Faster planting & fertilising speed
- ✓ Minimal maintenance requirements
- ✓ Sealed for life bearings – no greasing required



GAS & LIQUID TRAILERS

The BOSS Agriculture range of Gas & Liquid Fertiliser Trailers are available in steerable quad, castoring quad and 2 wheel trailing configurations.

Different tyre sizes are available depending on the weight of product to be carried and your floatation requirements.

Tyre sizes available include:

- 400 x 24 R1 Lug Tyre
- 18.4 x 30 R1 Lug Tyre
- 23.1 x 30 R1 Lug Tyre
- 24.5 x 32 R1 Lug Tyre
- 23.1 x 26 Diamond Lug Tyre

BOSS Agriculture Trailer features:

- ✓ BOSS trailers are heavily constructed with all joints reinforced with pressed sections that wrap around the RHS
- ✓ Tank mounts are bolted down so they can be moved or changed to suit different tank profiles
- ✓ Trailers are available on 2, 3 or 4 metre centres
- ✓ Low fill points available
- ✓ Raven mount available
- ✓ Hydraulic saddles incorporated into the chassis for mounting hoses or liquid lines
- ✓ Threaded mounting blocks located on the chassis for mounting additional hardware
- ✓ Optional hypro pump & filter mount kits





BOSS AGRICULTURE

BOSS Agriculture proudly build quality, innovative machinery in their state of the art facility in Inverell, northern NSW.

BOSS Agriculture entered the machinery market in 2010 due to client demand, Australian farmers wanted more options in their planting equipment than was available at the time.

BOSS Agriculture has a range of planters to suit different cropping zones across Australia, whether you farm flat plains or undulating hills with contour banks, we can offer a planter that will achieve a precise and consistent seeding depth and optimum crop establishment. BOSS Planters feature a combination of strength and frame flex with a vast range of row units and options available.



BOSS Agriculture

A Division of BOSS Engineering Pty Ltd
40 Taylor Ave Inverell NSW 2360
Phone **02 6721 2677**

Dan Ryan **0488 512 677**

Dave Herbert (QLD) **0439 286 277**

Warren Anderson **0447 560 815**