

Maxispread TD150

Capacity: 14m³

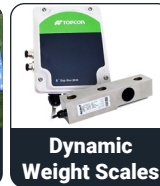


Overall Length:	6700mm
Overall Width:	3500mm
Overall Height:	3500mm
Bin Width:	2400mm
Bin Length:	4020mm
Spinners:	Twin - 800mm
Spinner Height:	1200mm
Hitch Height:	450-750mm Drop Hitch
Conveyor:	Endless 800mm wide
Wheel Centres:	3000mm
Tyre Size:	480/80 R42
Tyre Type:	Radial
Tyre height & width:	1,858 mm (h) x 494 mm (w)

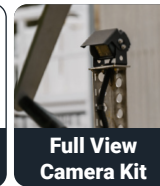
INCLUDED EXTRAS:



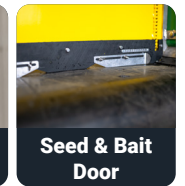
ISO Variable Rate Ready



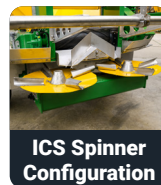
Dynamic Weight Scales



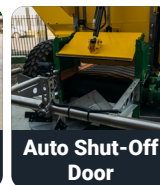
Full View Camera Kit



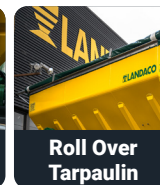
Seed & Bait Door



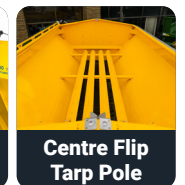
ICS Spinner Configuration



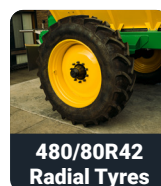
Auto Shut-Off Door



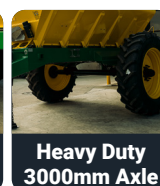
Roll Over Tarpaulin



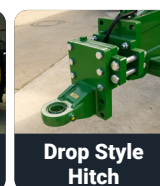
Centre Flip Tarp Pole



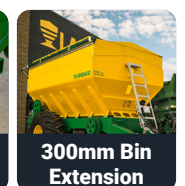
480/80R42 Radial Tyres



Heavy Duty 3000mm Axle



Drop Style Hitch



300mm Bin Extension

LANDACO Maxispread Trailing Spreaders Key Features:

- **TWIN HYDRAULIC SPINNERS:** Large 800mm dished spinners give the widest, most consistent spreading pattern possible. Spreads urea with exceptional accuracy.
- **ADJUSTABLE SPREADING DECK:** Allows you to change the spread pattern to suit your requirements.
- **REMOVABLE SPINNER DECK ASSEMBLY:** Controlled dumping, and laying feed trails.
- **WIDE SMOOTH CONVEYOR:** Top quality 800mm wide endless belt.
- **CONVEYOR BAND DESIGN:** Endless belt system with enhanced drive contact, preferred by contractors.
- **CONVEYOR DRIVE:** Compact hydraulic gearbox for electronic control & variable rate.
- **REAR DOOR:** 800mm x 400mm, graduated in 1mm increments for greater control and higher outputs.
- **CHASSIS:** Robust folded section chassis for stability and long working life.
- **DRIVE ROLLER:** Large diameter and crowned, with self-cleaning mechanism.